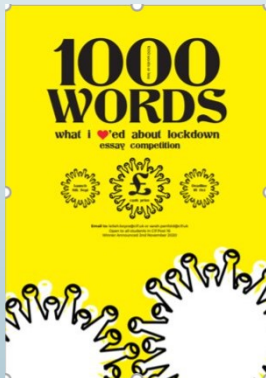


Lockdown Update 2

Good news updates

Huge congratulations to all of our students who passed their GCSE English and Maths resits recently.

With a 60% pass rate, the results have been fantastic and we are delighted that our students have seen the results of their hard work. Well done all!



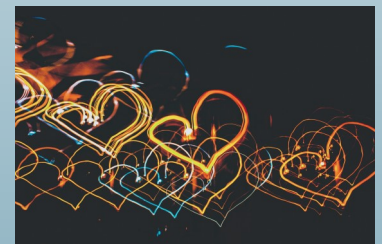
Congratulations to Georgia Hill, Frah-Ilhan Mohamed and Hubert Zagorzycki, the winner and runners-up respectively of our 1000 Words competition of “What I loved about lockdown”.

Georgia won a £60 cash prize and the runners up won £20 each.

Our staff team have been working incredibly hard to ensure that all students access live lessons and high-quality education during this period.

This hard work is paying off, with our highest ever levels of student engagement. Students have told us that the quality of the instructions and the resources that they are being given during lockdown are excellent, with 95% agreeing that XXXXXX

We also asked students what they thought of our staff and the comments were heart-warming. One comment summed up what many were saying “You will never know how much you have helped me achieve my dreams. You inspire me to do the best I can every step of the way .”



We have carried out over 200 Lateral Flow tests and all have been negative!

These tests allow us to detect Covid-19 in someone who is asymptomatic, breaking the chain of infection.

Staff are now being offered twice weekly tests and students on site are also welcome to be tested.

Do you have questions or comments about your son/daughter’s learning, their progress or anything that is happening at CLF Post 16? On **Thursday 4th February at 5pm** there will be an opportunity for a **live Questions and Answers discussion with Ms Cooper**, our Principal. [Book your space for this event here.](#)

Academic support during lockdown

Providing a high-quality education to all is at the heart of what we do.

Our teaching staff continue to provide exceptional live lessons through Teams to match students' timetables.

We have also recruited three dedicated Academic Coaches who are offering bespoke support to students to ensure that they have every chance to achieve their potential.

Students who are struggling to access their online education from home have been welcomed on site, where a dedicated staff member is there to support them throughout the day. We are also providing laptops and WiFi dongles to families that need them.

Staff will also be supporting students to create a "best piece" of lockdown work to support with our ongoing assessment of student progress and to provide students with detailed feedback to allow them to improve even more.

If you have any questions at all about our academic provision, please contact info@clfp16.com



Pastoral support during lockdown

With our students facing such challenging times, we are dedicated to supporting their emotional and mental wellbeing as well as their academic wellbeing.

Our pastoral support staff (which includes our Heads of College, our School Counsellors and our Student Support Team) have done a fantastic job of contacting every single student to check in with them.

Our Academic Mentors remain in touch with their Academic Mentor group with weekly check-in sessions and dedicated 1-2-1s.

We are also continuing to offer counselling sessions to students who would benefit from it. These sessions can be face-to-face, via phone or via Teams. If you think that your child could benefit from a listening ear, please encourage them to talk to their Academic Coach, who will make a referral. Our counselling service is free and confidential.

Covid update

Sadly, Covid continues to affect our community. 6 students have tested positive for Covid-19 since the start of the term and two students were identified as close contacts of one of these students and have been asked to isolate.

Request for feedback

We value your feedback on how your household and your son/daughter are managing with lockdown as this information will enable us to continue to offer the best possible support.

We would appreciate it if you could take 10 minutes to [fill in this survey](#).



Questions or comments? Contact us on 0117 9882525 or at info@clfp16.com